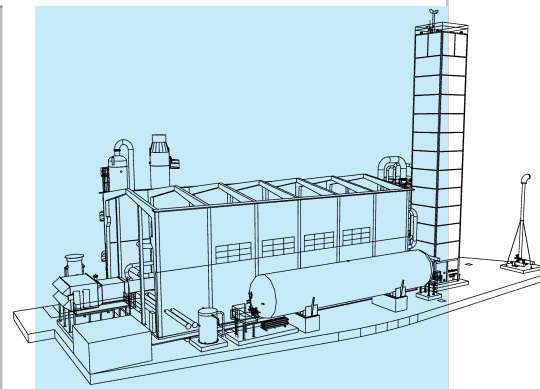


Remote support for Air Separation Unit (ASU) management

Continuous operation of the ASU at its maximum potential

Improvement of the efficiency of the ASU resulting in a considerable energy saving

Continuous support of the ASU constructor for any aspect linked to the process: “peace of mind”



SIAD Macchine Impianti has always been committed to providing support to ensure maximum performance of its products.

By means of the Remote Support Service we can guarantee the following advantages:

- *Peace of mind*: the customer can count on the continuous

support of the ASU constructor for any aspect linked to the process;

- *energy savings* of up to 5% on the total, thanks to optimization of the ASU operating parameters;
- improvement of the management of the rotary machines with a subsequent increase in useful life of

the machine (Meantime Between Failures “MTBF” and Meantime Between Maintenance “MTBM”);

- reduction in consumables;
- greater capacity to make use of the flexibility of the ASU in product terms;
- customers’ technicians are continuously updated on processes and hardware.

Remote support for Air Separation Unit (ASU) management

Telephone support	from headquarters*
Data analyses for improving ASU operation	monitoring once a month*

* To be determined with the customer





Technical Standard

Our certified Technical Standard envisages a xDSL connection, but we can also evaluate other connections.

We ensure maximum levels of security during the exchange of data and their safe-keeping. On request we can enable access to the remote system by means of security tokens.

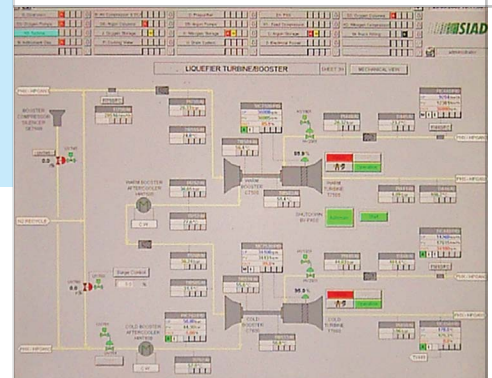
Global Service Division: a complete range of services

To reduce operating costs and to maintain the high efficiency of its Air Separation Units, SIAD Macchine Impianti offers its customers a complete range of services, together with a network of Certified Service Centres in five continents, operated by skilled technicians.

- **ASU maintenance and supply of spare parts:**
supply of spare parts;
maintenance work;
preventative maintenance;
predictive maintenance.
- **Remote assistance for ASU management:**
remote monitoring/parameter checks.
- **On-site support:**
commissioning and start-up supervision;
support for unit stop, restart and tuning.
- **Training courses:**
on-site theoretical and practical courses;
theoretical and practical courses at the SIAD Macchine Impianti works.



For further information:
siadmi_asu@siad.eu



Find out more about our range of services
at our website www.siadmi.com



© 2015 SIAD Macchine Impianti S.p.A.
All rights reserved

The information contained herein is offered for use by technically qualified personnel at their discretion and risk without warranty of any kind. We regularly update our data.

Printed in Italy
224uk12/15



SIAD Macchine Impianti S.p.A.
Società unipersonale soggetta all'attività di direzione e coordinamento di SIAD S.p.A.
24126 Bergamo, Italy - Via Canovine, 2/4
Share Capital € 25.000.000 paid up
VAT and Fiscal Nr.: (IT) 00228420162
R.E.A. BG-72619 - Export: BG 006107

Telephone +39 035 327611
Fax +39 035 316131

www.siadmi.com - siadmi@siad.eu